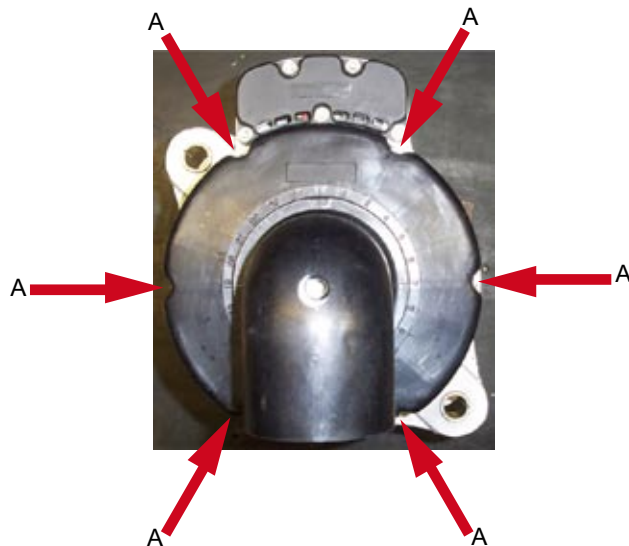


Source: Prestolite Electric Ltd - Greenford, London, UK
Date: September 16, 2010
Bulletin No: TSB4042 (Rev.01)
Models: AC203RA Alternators
Subject: Fitment of new solid lead frame rectifier assembly

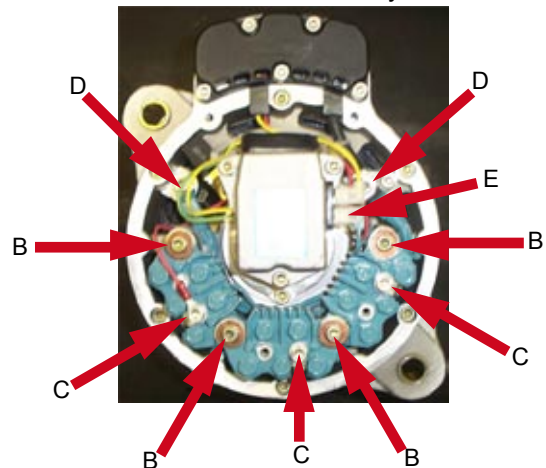
Fitment of AC203RA solid leadframe rectifier assembly

Please observe the following fitment instruction for the AC203RA solid leadframe rectifier assembly. Please take extra care to locate the rectifier assembly correctly and use only the mounting and stator screw provided with the new rectifier kit. Also refer to exploded view on page 3.

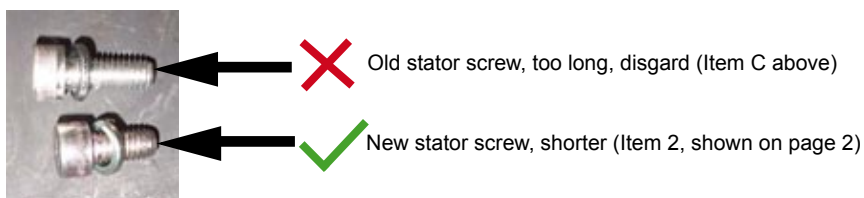
1. Unscrew the 6 capscrews "A" and remove the plastic rear cover.
Retain the cover, capscrews and washers.



2. Unscrew the 4 capscrews marked "B" and discard. Unscrew the 3 capscrews marked "C" and discard. Unscrew the 2 capscrews marked "D", retain these capscrews, washers and insulators, they are re-used in assembly. Pull out lucar connector marked "E". Remove the old rectifier assembly and discard.



3. Remove the new solid leadframe rectifier and components from packaging.
NOTE: The new rectifier is supplied with new rectifier mounting screws, insulators and washer (items 6, 3, 5, 4), and also new stator terminal connection screws and washers (items 2, 3). These new screws are shorter than the old screws. DO NOT use the old screws, this would result in irreparable damage to the new rectifier .



Continued, page 2...

Important: The information contained in this bulletin is intended for use by trained, professional technicians who have the proper tools, equipment, and training to perform the required maintenance described above. This information is NOT intended for 'do-it-yourselfers', and you should not assume that this information applies to your equipment. If you have any questions regarding this information please visit our website at www.prestolite.com, or contact our technical service department at:

TSB4042 - Fitment of AC203RA solid leadframe rectifier assembly (page 2)

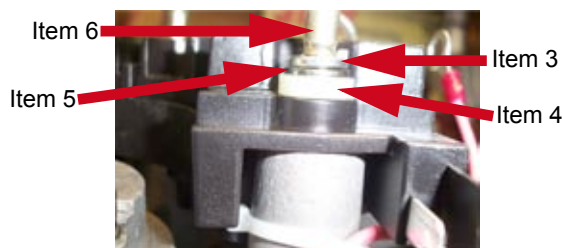
4. Note the insulation boss on the new rectifier assembly, this must seat in the recess on the rear end housing.



5. Fit the new rectifier by hand, ensuring all 4 insulation bosses seat correctly in the rear end housing, as shown in 4 above.



6. Fit new insulation washer, steel washer, spring washer and capscrew (items 6, 3, 5, 4). Screw down the 4 new screws and torque to 7Nm. (Also see drawing on page 3)



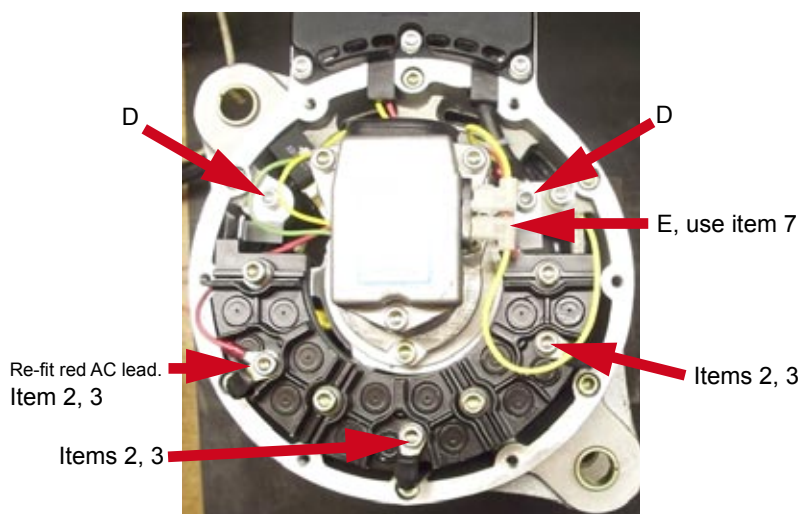
7. Fit 3 new stator connection screws and spring washers (items 2, 3).

Connect the red AC lead to the stator, as shown below.

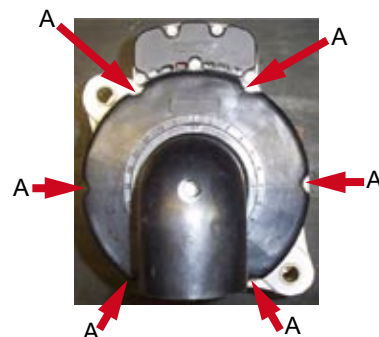
Screw down the 3 new screws and torque to 6Nm.

Fit screws and spring washes to rectifier terminal tags (marked "D"), re-use old screws and spring washers. (See page 1, instruction 2). Torque screws to 7Nm.

Connect new yellow lead (item 7) to side of regulator, and rectifier assembly as shown in "B".



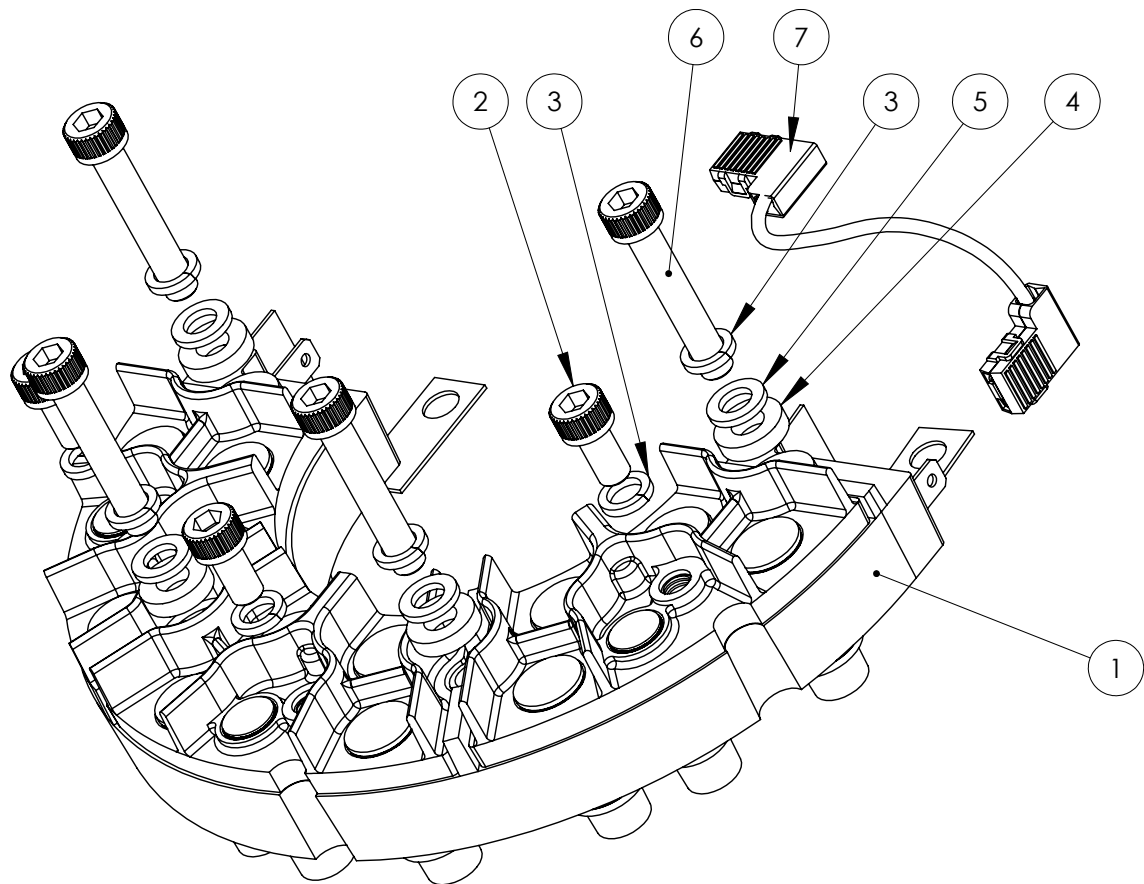
8. Re-fit the rear cover, fit original screws "A" and washers, item "A" (see page 1). Torque to 3Nm.



Continued, page 3...

Important: The information contained in this bulletin is intended for use by trained, professional technicians who have the proper tools, equipment, and training to perform the required maintenance described above. This information is NOT intended for 'do-it-yourselfers', and you should not assume that this information applies to your equipment. If you have any questions regarding this information please visit our website at www.prestolite.com, or contact our technical service department at:

TSB4042 - Fitment of AC203RA solid leadframe rectifier assembly (page 3)



ITEM NO.	DESCRIPTION	QTY.	TORQUE
1	MOULDED DIODE PACK	1	-
2	SCREW M6 x 12LG	3	6 Nm
3	SPRING WASHER M6	7	-
4	INSULATOR	4	-
5	PLAIN WASHER M6	4	-
6	PATCH LOCK SCREW M6x35LG	4	7 Nm
7	ASSEMBLED LEAD	1	-
8	TECHNICAL SERVICE BULLETIN	1	-

Important: The information contained in this bulletin is intended for use by trained, professional technicians who have the proper tools, equipment, and training to perform the required maintenance described above. This information is NOT intended for 'do-it-yourselfers', and you should not assume that this information applies to your equipment. If you have any questions regarding this information please visit our website at www.prestolite.com, or contact our technical service department at:

Prestolite Electric Ltd
Unit 48, The Metropolitan Park
12-16 Bristol Road, Greenford,
Middlesex
UB6 8UP, United Kingdom

Tel: +44 (0) 20 8231 1000
Fax: +44 (0) 20 8575 9575
eu_info@prestolite.com